

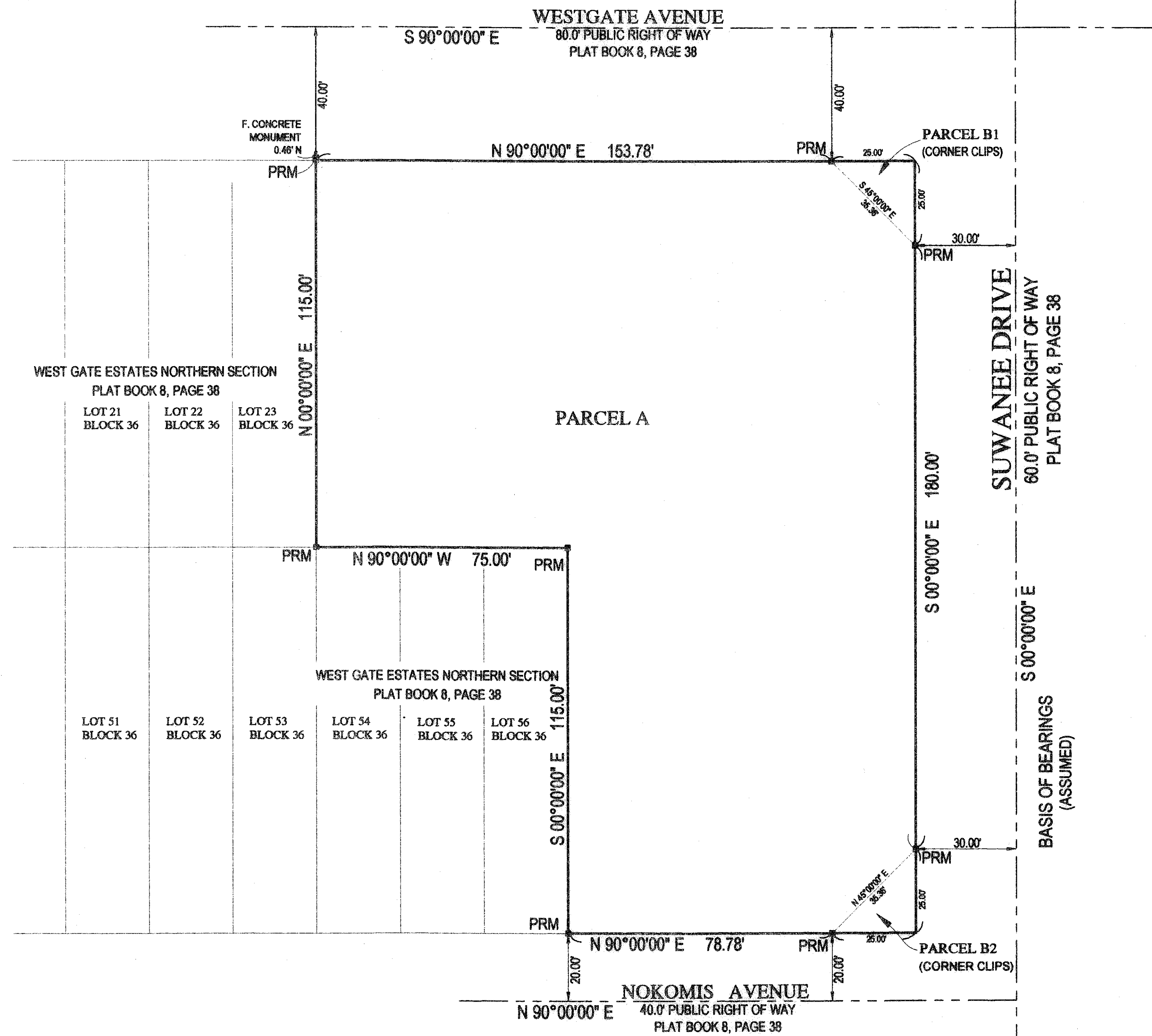
35

POURPAKI PLAT

BEING A REPLAT OF LOTS 24 THROUGH 30 AND LOTS 57 THROUGH 60 OF BLOCK 36
BEING A PART OF WEST GATE ESTATES NORTHERN SECTION
PLAT BOOK 8, PAGE 38
LYING IN SECTION 30, TOWNSHIP 43 SOUTH, RANGE 43 EAST,
PALM BEACH COUNTY, FLORIDA

SHEET 2 OF 2
MAY 2007

COUNTY OF PALM BEACH
STATE OF FLORIDA
THIS PLAT WAS FILED FOR RECORD AT ____ M.
THIS ____ DAY OF ____
A.D. 2007 AND DULY RECORDED IN PLAT BOOK
ON PAGES ____ THRU ____
SHARON R. BOCK
CLERK AND COMPTROLLER
BY: _____, D.C.



NOTICE:
THIS PLAT, AS RECORDED IN ITS GRAPHIC FORM, IS THE OFFICIAL DEPICTION OF THE SUBDIVIDED LANDS DESCRIBED HEREIN AND WILL, IN NO CIRCUMSTANCES, BE SUPPLANTED IN AUTHORITY BY ANY OTHER GRAPHIC OR DIGITAL FORM OF THIS PLAT.
THERE MAY BE ADDITIONAL RESTRICTIONS THAT ARE NOT RECORDED ON THIS PLAT THAT MAY BE FOUND IN THE PUBLIC RECORDS OF THIS COUNTY.

SEAL SEAL SEAL SEAL SEAL SEAL SEAL SEAL

COMPASS SURVEYING
5891 CORPORATE WAY
SUITE 210
WEST PALM BEACH, FL 33407
PHONE: 561.640.4277
FAX: 561.640.4261
www.compassurveying.net
L.B. #7463

REVISION POURPAKI
PAGE 35
BLOCK 36
PLAT BOOK 8
REVISION 10
DATE 9/12/07
BY: P.S.M.